

PACIFIC CORPORATE CENTER

2,497 Sq. Ft.
Office Space For Lease

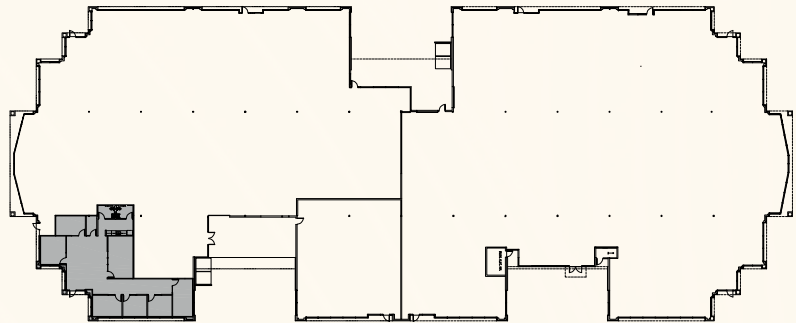
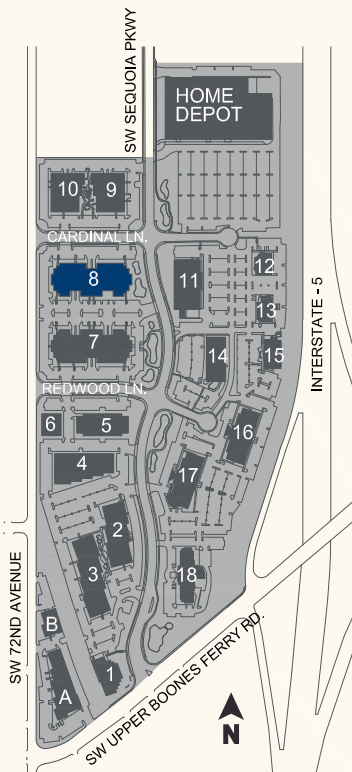
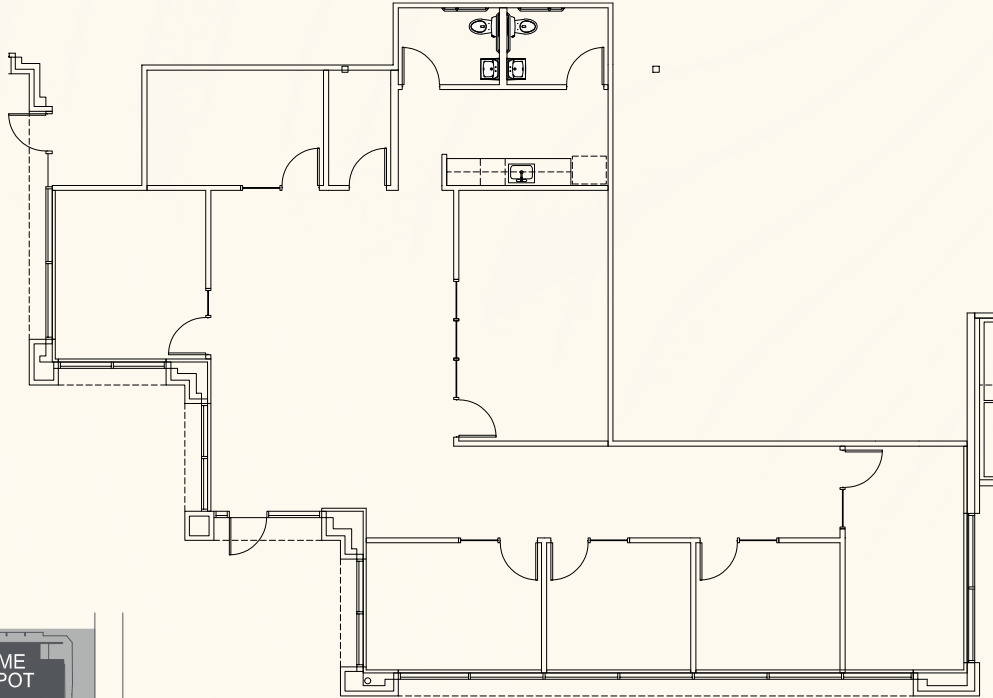


15055 SW Sequoia Pkwy, Suite 170, Portland, OR 97224

PACTRUST

Space Plan | Suite 170

PacTRUST



Building Plan

Building 8



Key Features



2,497 sq. ft

Attractive landscaping with walking paths

Immediate access to I-5

Excellent glass line

Walkable environment offering a variety of amenities including Starbucks and adjacent to Gold's Gym

Space Available 9.1.26

Lease Rate:
\$24.00/sq. ft./yr.

NNN Lease

Suite 170



Leasing Contacts

Jake Bigby

jakeb@pactrust.com

Caitlin Knecht

caitlink@pactrust.com

503.624.6300

www.pactrust.com

Owned & Managed by

PacTrust

Pacific Corporate Center
Office Space For Lease

15055 SW Sequoia Pkwy
Suite 170
Portland, OR 97224

